



Niftylift 120HL

Operating & Safety Instructions



**These operating instructions
must be read by operator
before using Niftylift**

***IMPORTANT* CHARGE BATTERIES EVERY NIGHT
(8 HOURS MIN.)**

113 MANNINGHAM LANE
MANNINGHAM
BRADFORD
BD8 7JA

TEL: 01274 731333
FAX: 01274 392639

www.jgharrison.co.uk

NL120HL_Book_ver1.0.qxp

WEBSTER HILL
HUDDERSFIELD ROAD
DEWSBURY
WF13 2RU

TEL: 01924 465802
FAX: 01924 454103

NEW BRUNSWICK STREET
OFF GIBBET STREET
HALIFAX
HX1 5BW

TEL: 01422 363525
FAX: 01422 343070

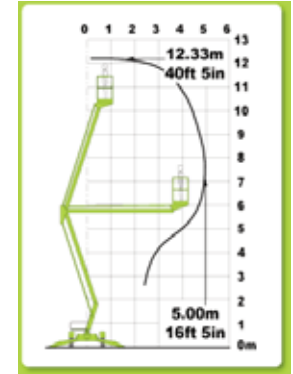
E-mail: sales@jgharrison.co.uk

HAYNES STREET
OFF WHITWORTH ROAD
ROCHDALE
OL12 0UW

TEL: 01706 860860
FAX: 01706 860999

A lightweight, trailer mounted, articulated boom platform, able to lift one or two men plus tools.

Power:	12v Battery Operated Hydraulic Motor
Max. Working Height	12.3m(40ft 5")
Platform Height:	10.33m(33ft 10")
Outreach:	5m (16ft 8")
Cage Capacity:	200kgs (440lbs)
Travelling Width:	1.5m (4ft 11")
Working Width:	2.7m (8ft 11")
Width (Retracted):	1.1m (3ft 6")
Overall Length:	5.5m (18ft)
Max. Working Load	200kg(440lbs)
Platform Stowed	1.96m(6ft 5")



SETTING UP

- Position platform on firm level ground. If on a slight gradient, (12° Max) face platform downhill with work cage on the uphill side.
NEVER work with base across the slope.
- Position platform, bearing in mind range of movement of booms to avoid overhead obstructions.
- Apply handbrake, chock wheels, uncouple platform from towing vehicle and cone off machine if working on a road or busy factory area.
- Remove transport boom clamp (between base cradle and lower boom) Uncouple number plate light bond (between cage and base)
- Turn hydraulic function selector valve lever to legs supply (down) (Horizontal)
- Insert key in base control panel and turn to ground.
- Lower the two front outriggers first (To take weight off jockey wheel) by pressing green button on forward outrigger controls and pressing levers down. Then lower the two rear outriggers onto firm level ground, raising the platform base and avoiding manhole covers, drains etc.
- If ground is soft (eg. grass etc.) use scaffold boards under feet.
- Level platform using spirit level mounted on base. (Make sure all outriggers are still in firm contact with ground)
- Return hydraulic function selector valve lever to boom supply (Up) (Vertical)
- Observe carefully operating instructions & warning labels on the platform booms & base.
- On completion of work, fully lower booms, raise the two rear outriggers first and then raise the two front outriggers.

NOTE: MACHINES HAVE PRESSURE SENSITIVE MICRO SWITCHES WHICH ENSURE THE MACHINE WILL NOT OPERATE UNLESS ALL THE HYDRAULIC OUTRIGGERS ARE IN FIRM CONTACT WITH THE GROUND. IT IS MOST IMPORTANT THE PRESSURE IS ON EACH HYDRAULIC OUTRIGGER OR THE MACHINE MAY CUT OUT. THESE MACHINES ARE NOT INSULATED.

OPERATING INSTRUCTIONS

- a) Ensure platform is set up as previous paragraph.
- b) There are 2 sets of boom controls: (i) At base of machine (ii) In the cage

To activate the hydraulic motor a key must be inserted onto the control panel, turned ON and green button pressed.	
BASE AND CAGE CONTROLS	
Left Hand Lever Lower Boom	“UP” for Raise / “DOWN” for Descent
Centre Lever Upper Boom	“UP” for Raise / “DOWN” for Descent
Right Hand Lever Swing Rotation	“UP” for Cage Right / “DOWN” for Cage Left

NOTE:

- i) With battery operated system the green power button **MUST** be pushed in before any lever operation is made.
- ii) The booms maybe raised or lowered by pressing green button and pushing down either left lever (lower boom) or centre lever (upper boom), once descent commences button should be released to save power.
- iii) Before lowering booms to stowed position they **MUST** be lined up with the cradle then fully lowered before the outriggers can be raised.

EMERGENCY DESCENT

- a) Push in red emergency stop to shut down all functions. Operate emergency hand pump and lower on hand lever controls. To swing booms fit a 1/2” drive socket to the end of the worm gear and crank round manually.
- b) In the event of an incapacitated operator: switch key to lower controls and bring down the cage, using lower hand valves in the normal manner (button must be held continuously).

BATTERIES

- a) The battery **MUST** be charged after completion of task or overnight.
Charger is automatic
NOTE: RED LIGHT indicates charger “ON”
RED/GREEN indicates in charging mode
GREEN indicates batteries charged.
- b) Check eletrolytic level in battery before commencing charge.
- c) **CHECK OPERATING VOLTAGE** before connecting to power supply ie. 110v ac or 240v ac
(set at 240v ac)
- d) Use a residual current device (RCD) on 110/240v supply.
- e) Charging may take up to 12 hours if batteries are very flat.
- f) If the hydraulic motor speed noticeably reduces, stop using machines and recharge batteries.

SAFETY

Your attention is drawn to the Health & Safety at Work Act and the need to carry out a thorough risk assessment when undertaking any work.

- I) **The ground needs to be firm** to carry the weight of the platform particularly where the stabilisers meet the ground.
 - II) Before attempting to raise the platform a thorough inspection of the operating area must be made
 - III) If the platform is to be used in an area where vehicles have access the base must be protected from collision by the use of signs, bollards etc.
- a) **NEVER EXCEED SAFE WORKING LOAD** (200kgs/400lbs)
 - b) **NEVER RAISE BOOMS WITHOUT PROPERLY EXTENDING ALL HYDRAULIC OUTRIGGERS**
 - c) **NEVER** allow booms knuckle or cage to swing out into the road, or in the path of oncoming traffic.
 - d) **NEVER** move machine without **FULLY LOWERING BOOMS** and retracting all hydraulic outriggers
 - e) **DO NOT** work in wind speed exceeding 30mph (50kph) or carry large sheets, eg. plywood, PVC glass in windy conditions.
 - f) **DO NOT** allow power tools, cables, air lines etc. to “hang free”. Tie them to the booms.
 - g) **DO NOT** raise platform within close proximity of overhead power cables. Where it is necessary to operate within the vicinity of power cables, the local Electricity supply co. must be notified and no work should be carried out without prior approval of the supply co. *Remember power lines can kill.*
 - h) **DO NOT** attempt to increase your reach by climbing on the cage. Remember over reaching causes falls.
 - i) Wear appropriate safety clothing ie. Safety helmet, Safety restraint belt etc.
 - j) Should the equipment fail to operate **DO NOT** attempt to rectify, but contact JG Harrison & Sons Ltd **Helpline on 01422 363525.**
 - k) **DO** take advantage of the instructions on offer for the safe use of this power platform. If you are not sure we will be pleased to arrange additional instructions for you or your staff.

NARROW ACCESS

The axle on the road trailer base can be telescoped down to 1.1m (3ft 6”) simply by (I) Lifting the wheels clear of the ground with the Hydraulic outrigger legs; (II) releasing the screw clamps on the axles; (III) pulling up the spring loaded “snap” pins (IV) pushing complete wheels, mudguard assembly in towards the centre of the trailer unit until the spring pin snaps into place; (V) tightening screw clamps on the top of the axles. Before towing on the road the above procedures **MUST BE** reversed and the axle extended to 1.5m (4ft 11”) overall width.

TOWING

UNDER NO CIRCUMSTANCES MUST THE TRAILER BE TOWED ON THE PUBLIC HIGHWAY WITHOUT:

- a) After coupling to vehicle ensure parking brake is fully off.
- b) Ensure red safety wire is firmly attached to the towing vehicle.
- c) Booms fully lowered and secured by tie down clamp.
- d) Jockey wheel fully raised into towing position.
- e) The axles fully extended to 1.5m (4ft 11”) pins fully engaged and being firmly clamped down by the two axle screws, on the trailer base.
- f) Hydraulic outrigger legs fully raised.

DO NOT EXCEED 50MPH (80KPH)